

# Registry Case Study: The PRELUDE Registry

A biotech company needed real-world evidence for their genomic risk test to support guideline inclusion, payor reimbursement, and commercial adoption



## OUR APPROACH

- > Launch a prospective, observational disease registry of 2,500 patients at 100 Axess member sites
- > Create a de-identified database that can be queried to determine the utility of their genomic test in the diagnosis and treatment of ductal carcinoma in situ (DCIS) of the breast



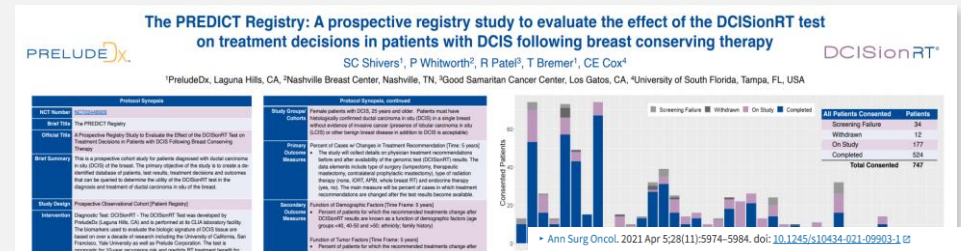
## RESULTS

- > Generated real-world evidence supporting the company's genomic risk test
- > Supported guideline inclusion and clinical adoption
- > Provided evidence for payor coverage



## IMPACT

- > Registry data changed physician radiation therapy recommendations in ~40% of patients with DCIS
- > Evidence from the PRELUDE/PREDICT registry was used to support Medicare coverage through the MoIDX Program and in discussions with commercial payors regarding the test's clinical value



### The Clinical Utility of DCISionRT® on Radiation Therapy Decision Making in Patients with Ductal Carcinoma In Situ Following Breast-Conserving Surgery

Chirag Shah<sup>1</sup>, Troy Bremer<sup>2</sup>, Charles Cox<sup>3</sup>, Pat Whitworth<sup>4</sup>, Rakesh Patel<sup>5</sup>, Anushka Patel<sup>6</sup>, Eric Brown<sup>7</sup>, Linsey Gold<sup>7</sup>, David Rock<sup>8</sup>, Lee Riley<sup>9</sup>, Christy Kesslering<sup>10</sup>, Sheree Brown<sup>11</sup>, Robert Gabordil<sup>12</sup>, James Pellicane<sup>13</sup>, Rachel Rabinovich<sup>14</sup>, Sadia Khan<sup>15</sup>, Sandra Templeton<sup>16</sup>, Lonika Majithia<sup>17</sup>, Shawna C Willey<sup>18</sup>, Fredrik Wärnberg<sup>19</sup>, Naamit K Gerber<sup>20</sup>, Steve Shivers<sup>2</sup>, Frank A Vicini<sup>21,23</sup>

Author information Article notes Copyright and License information

PMCID: PMC8526470 PMID: 33821346